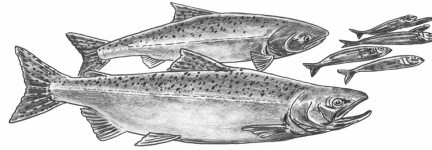


1999 Louie Lee Creek Restoration



Why was restoration needed?

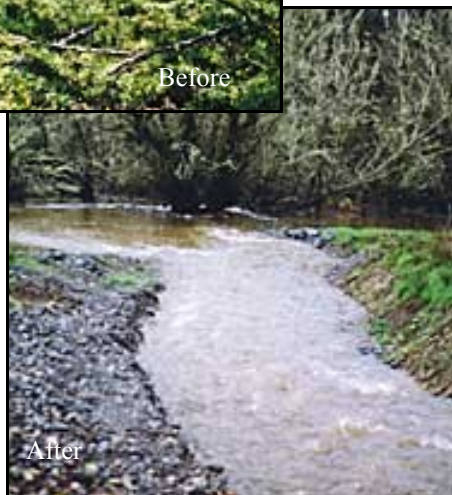
During the summer of 1998 and 1999, NOSC along with several project partners relocated Louie Lee Creek so that it flows into a pond to provide year-round salmon habitat. Louie Lee Creek has been impacted by recent logging in the upper watershed, long term agricultural practices, and railroad/highway development. This project will improve salmon and wildlife habitat along this stretch of the creek.



Project Overview

Location: Louie Lee Creek, Clallam County

Louie Lee Creek was once moved from its natural location to create more pasture. This caused the stream to become deeply incised along the Lee property and often flow subsurface during the summer. A large pond on the western margin of the property is connected to the intermittent stream and wetland complex. Fish such as coho, steelhead and cutthroat are known to inhabit the creek and were often stranded and killed when the stream and pond went dry. A permanent channel for constant flow and fish access was constructed and a riparian buffer was planted.



Project Sponsor

North Olympic Salmon Coalition

Project Partners

Clallam County Conservation District, Lower Elwha Tribal Fisheries, Washington Department of Fish and Wildlife, Natural Resource Conservation Service

